



# EagleRIP

## *PDF 1.7-PostScript 3*

PDF 1.7 - PostScript 3 for superb quality documents  
Ensure output quality and reduce errors with fast and flexible screen previews and dot previews  
Performance that meets your most demanding print production needs  
Save media and time with ganging  
Higher quality print with screening options





EagleRIP PDF 1.7-PostScript 3

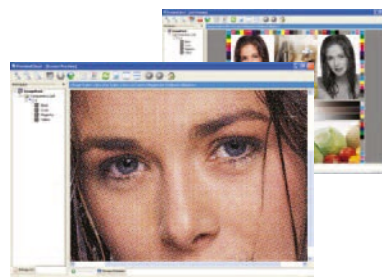
## PDF 1.7 - PostScript 3 for superb quality documents

Founder's EagleRIP creates superb quality PDF and PostScript jobs. Complex documents, vivid colors, transparent objects, files with embedded ICC profiles and smooth shading are consistently processed to meet the high standards of the most demanding customer. EagleRIP provides support for features within PDF 1.7 and PostScript 3.



## Ensure output quality while reducing errors with fast, flexible and detailed screen and dot previews

Ensure the output to plate is accurate by digitally previewing color and dot shape prior to committing to physical output. EagleRIP lets you preview color separations and composites, and includes preview functions such as Zoom, Negative, Mirror, Rotate and Screen preview of the bitmap dot.



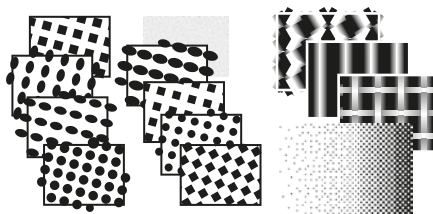
## Save media and time with ganging

EagleRIP Ganging Viewer allows the operator to view multiple pages simultaneously, thus reducing the time spent to confirm that all pages have the correct content, and image data is in the correct orientation prior to output. Ganging allows the user of CTF and proofing to maximize the usage of media for lower costs. Ganging can be either automatic or by manual control providing maximum flexibility.

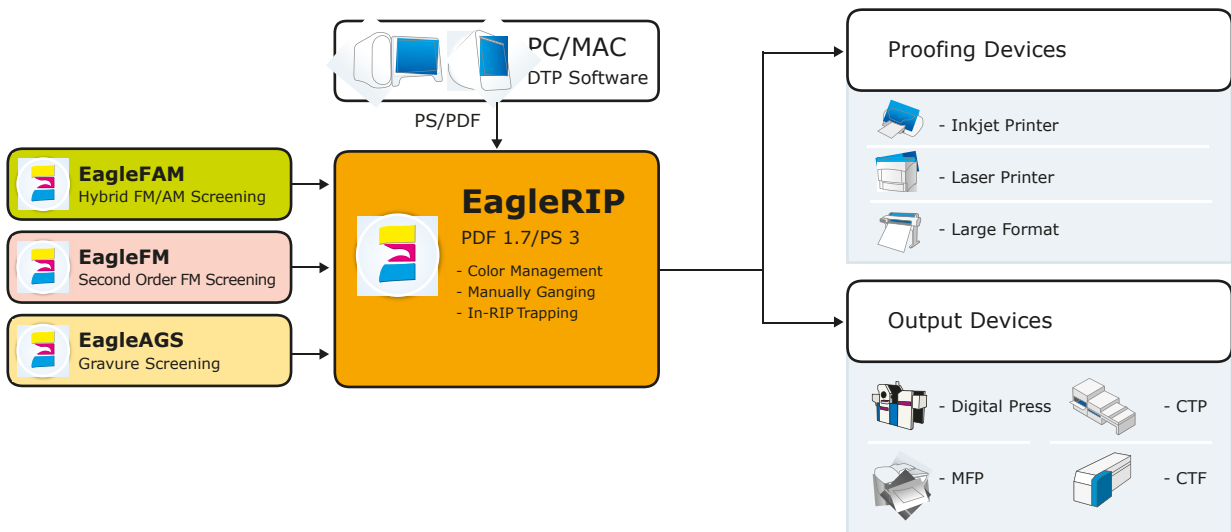


## Higher quality print with screening options

EagleRIP screen dot shapes allow users to select the dot that ensures maximum printing quality. Nine standard screenings include Euclidean Round, Rhomb, Ellipse, Diamond, Pure Round, Sharp Ellipse, Square, EagleAM, Gravure and FM screening. Optional screenings are EagleFAM (AM & FM hybrid screening), EagleFM (Second order FM screening) and EagleAGS (Gravure screening) are available as plug-ins.



## Performance that meets your most demanding print production needs



Founder's EagleRIP is multi-threaded and scales with system platform performance. For maximum flexibility EagleRIP supports over 100 CTP, CTF, Indigo press, laser printer and digital proofer devices, as well as 1 bit TIFF, 8-bit TIFF and Winprint output used by most leading vendor print devices.

## Key Features

- ▶ PostScript 3 and PDF 1.7 RIP with PDF native interpreter
  - ▶ Supports PDF 1.7 document features including transparency, embedded ICC Profiles, 128-bit encryption, JPEG2000 filter and Cross-Reference stream.
- ▶ Supports more than 100 CTP, CTF, Indigo press, digital proofer and laser printer devices
- ▶ TIFF 1-bit output, 8-bit TIFF and WinPrint output
  - ▶ Productive RO.O.M. (Rip Once, Output Many) solution accepted by digital proofing, CTF/CTP workflow solutions
  - ▶ Driver can generate 1-bit TIFF file with no compression and CCITT GROUP4, or 8-bit TIFF file with no compression, LZW and Packbits
- ▶ Fast and flexible screen preview and dot preview
- ▶ Built-in manual and automatic ganging and ganging preview
- ▶ Optional CIP3 output plug-in produces PPF file which reduces set up time and wastage.  
Screening
  - ▶ 9 built-in screen shapes: Euclidean Round, Rhomb, Ellipse, Diamond, Pure Round, Sharp Ellipse, Square, EagleAM, Gravure and FM screening
  - ▶ Optional Screenings: EagleFAM (AM & FM hybrid screening), EagleFM (Second order FM screening) and EagleAGS (Gravure screening)
- ▶ Supports TrueType and CID font and better performance of Asian fonts
- ▶ Flexible network printing: NT Pipe, AppleTalk & Hot Folder
- ▶ Tiffow plugin for 1-bit TIFF PostRIP imposition workflow solution
- ▶ SDK (Software Development Kit) available for OEMs

## Recommended System Configuration:

**CPU** : Intel® Pentium IV 2 GHz processor

**Memory** : 2 Gigabytes or above

**Hard Disk** : 20 Gigabytes free space

**Display** : 1024 x 768 Color

**Network** : 100MB Ethernet

**OS** : Windows 2000 or Windows 2003

## Compatible with major software packages:

Adobe® Illustrator & Indesign & PageMaker

Corel® CorelDraw

Adobe® FreeHand

Microsoft® Office Suite

QuarkXpress®

